



2 Minute **TURBO-TAN** Spray System

The ORIGINAL 2 Minute Turbo Tan!

Pro Tanning System **TURBO-TAN** Owner's Manual

**This Manual covers all
TURBO-TAN Models.**

Congratulations on choosing the Pro Tanning Systems PTS Turbine Tanning System. This Turbine tanning system features DHA as the active ingredient to produce an attractive golden brown tan. DHA is an FDA approved nontoxic product that is a safe, reliable means of tanning without the potential health risks associated with exposure to UVA and UVB rays from the sun or other methods of tanning the skin. There will be more about DHA on Page 13 of this manual.

NOTE: This Turbine Tanning system was designed in cooperation with the manufacturer specifically for DHA product application. If you need service or replacement for any of the equipment provided in this kit, please contact us at the number below. The use of equipment not specifically designed for waterborne DHA solutions may cause damage by corrosion or worse.

NOTE: The DHA Tanning Solution provided with this system has properties formulated specifically for use with your Turbine Tanning System. For optimum performance, we recommend using only the **TURBO-TAN**-Optimized DHA Solution with your Turbo-Tan System.

Pro Tanning Systems

San Diego, CA (858) 909-2190



Pro Tanning Systems **TURBO-TAN** Manual

Re-Order product at TURBO-TAN.com

Unpacking your **TURBO-TAN** System

As you unpack your Pro Tanning Turbine System, here's what you will find:

- One Pro Tanning System **TURBO-TAN** Turbine Pump Unit
- One Pro Tanning System **TURBO-TAN** Gun
- One Pro Tanning System **TURBO-TAN** Gun Product Bottle
- One Pro Tanning System **TURBO-TAN** Gun Hose
- One 16 ounce Pro Tanning **TURBO-TAN** Gun Cleaning Solution
- One Pro Tanning System **TURBO-TAN** Manual (this book)

Depending on the specific model you purchased, you may have received some or all of the following:

- One or more bottles of Dark Pro Tanning System **TURBO-TAN** DHA Tanning Solution
- Pro Tanning **TURBO-TAN** DVD or Video Tape
- Pro Tanning **TURBO-TAN** Salon Display & Marketing Kit

NOTE: Both the Dark and Clear DHA Tanning Solutions contain the same level (8.5%) DHA and produce the same tanning effect, and are available in Pint, Quart, and Gallons. The sizes in your kit will vary depending upon the specific model you purchased.

If any of these items are damaged or missing in shipping, please call (858) 536-7960 during normal business hours, 8 am to 5 PM, Monday thru Friday pacific time.

See Assembly & Setup on page 5.

Pro Tanning Systems **TURBO-TAN** Manual

Re-Order product at TURBO-TAN.com

WARNING

DO NOT USE EQUIPMENT BEFORE READING THIS SECTION

A fire or explosion hazard is present when spraying flammable materials. In order to assure safe operation of your spray system, please read the following instructions carefully.

- Always spray in a well ventilated area.
- Always keep turbine system at maximum length of hose.
- Always store indoors, never allow unit to freeze.
- Always use original manufacturers replacement parts
- Never alter or modify any part of this equipment; doing so can cause equipment malfunction and/or bodily injury.
- Never attempt to clean any part of the turbine system while it is plugged in.
- **CAUTION: TO REDUCE THE RISK OF ELECTRIC SHOCK, DO NOT EXPOSE TO WATER.**
- Never leave spray equipment unattended. Keep away from children or any person not familiar with spray equipment.

GROUNDING INSTRUCTIONS: This product should be grounded. In the event of an electrical short circuit, grounding reduces the risk of electrical shock by providing an escape wire for the electric current. This product is equipped with a cord that has a grounding wire and appropriate grounding plug. The plug must be plugged into an outlet that is properly installed and grounded in accordance with all local codes and ordinances. Do not operate unit with a damaged cord or plug. Do not pull or carry unit by the cord. Keep away from heated surfaces. Do not unplug by pulling on the cord.

DANGER: Improper installation of the grounding plug can result in the risk of electric shock. Check with a qualified electrician or serviceman if in doubt as to whether the product is properly grounded. Do not modify the plug provided. If it will not fit the outlet, have the proper outlet installed by a qualified electrician. This product is for use on a nominal 120 volt circuit and has a grounding plug similar to the one illustrated. Make sure that the turbine is connected to an outlet with the same configuration as the plug.
DO NOT USE ANY ADAPTERS WITH THIS PRODUCT.

USING EXTENSION CORDS: Use only a three wire extension cord with a 3-slot receptacle similar to the plug on the turbine. Make sure your extension cord is in good condition. When using an extension cord, be sure to select one that will carry a heavy enough current for the turbine system used. An undersized cord will cause a drop in the line voltage resulting in loss of power and overheating. If in doubt use the next heavier gauge. The smaller the gauge number, the heavier the wire thickness. Please use the chart below as a guide to selecting the proper size extension cord.

Pro Tanning Systems **TURBO-TAN** Manual

Re-Order product at TURBO-TAN.com

More about your new TURBO-TAN System

You are about to enjoy the great benefits of turbine spraying. Our designs are the result of many years experience in manufacturing turbine spray systems, and Turbine spray guns.

Whether you are new to spraying, you have sprayed before, or are just new to turbine spraying, there are some basic spraying guide lines that will help you to achieve the best results and optimum success from your new equipment. Reading this information carefully and following these simple steps will ensure that you get the best performance and results from your new TrueHVLP™ **TURBO-TAN** System.

HOW YOUR TURBO SPRAY SYSTEM WORKS

Your **TURBO-TAN** System has three components: the turbo unit, an air hose and a **TURBO-TAN** System spray gun. The turbine unit when connected to the correct electrical power supply and with the on/off switch in the "on" position, provides a continuous source of clean, warm, dry, low pressure turbine air. The air hose connects the turbine unit to the spray gun. Air flows through the hose to the nozzle of the specially designed **TURBO-TAN** System spray gun. Atomization of the tanning solution is achieved when the air mixes with the stream of fluid passing through the tip/nozzle. This low pressure atomization principle achieves minimum misting (overspray) to the spray environment.

The **TURBO-TAN** System turbine blower has one air hose outlet on the side of the unit and is designed to run one spray gun.

Caution: Even when the turbine unit is turned off and/or the gun is disconnected from the hose, pressure will remain in the spray cup. If you pull the trigger back, a stream of fluid will flow. To prevent accidents, turn paint flow or trigger throw screw clockwise until it is completely closed. The trigger is now locked in the closed position. Another way to prevent the flow of solution is to remove and replace the fluid / spray cup to allow the air pressure to escape.

Note: It is not necessary to empty and clean your spray gun when you pause between applications. Be sure, however, to clean your spray gun thoroughly at the end of your work session. It is a bad idea to leave solution in your spray gun overnight.

Pro Tanning Systems **TURBO-TAN** Manual

Re-Order product at TURBO-TAN.com

Assembly and Set Up

What you will need:

The Pro Tanning Systems TURBO-TAN System - no tools are required.

Start by attaching the threaded end of the hose to the air outlet on the Turbine Air Pump.

Next, attach the other end of the air hose to the Turbine Gun by pulling back the collar on the quick disconnect fitting on the hose, then push the air intake fitting on the gun into the fitting on the hose.

Finally, thread the product bottle to the gun. That's it for assembly.

GUN SETUP and ADJUSTING - More details on the page 8.



The AccuSpray/**TURBO-TAN** Gun (black) has 2 adjustments:
← **Fan Pattern Control** and
← **Fluid Control** (trigger throw).

We recommend starting with the Fan Pattern Control all of the way closed (clockwise) and then make adjustments as you develop a feel for the gun.



The Standard **TURBO-TAN** Gun (metal) has 1 adjustment:
Fluid Control (trigger throw).
←

The Fluid Control should be most of the way in (clockwise) to avoid overloading the solution on the client. Keep it light; more is **not** better.

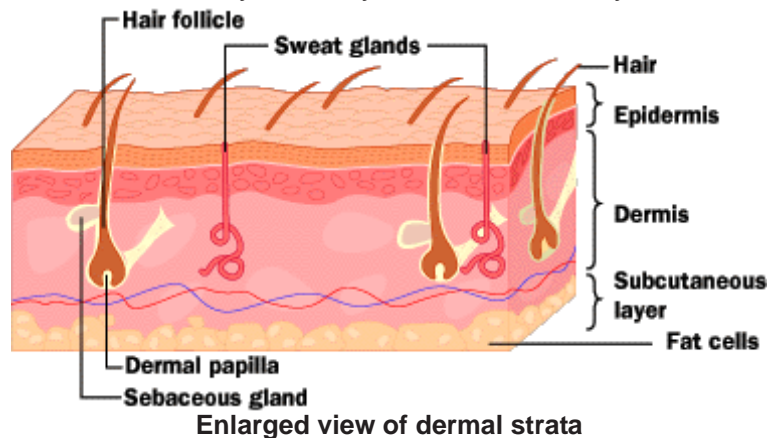
Pro Tanning Systems **TURBO-TAN** Manual

Re-Order product at TURBO-TAN.com

DHA Tanning Solution tans only the uppermost layer of the epidermis.

This uppermost stratum corneum layer is constantly being shed-off by the body, so the tan will only last as long as it takes for the subject to shed this outer dead layer of the epidermis.

DHA Tanning Solution is not absorbed into the Dermis or into any other systems of the body.



Every day, millions of dead skin cells are sloughed off or worn away from the surface of your skin. In fact, every 35 to 45 days, you have an entirely new epidermis. This is why tans from sunless- or self-tanning lotions will gradually fade — as the dead cells are worn away, so is your tan. For this reason, most of these products suggest that you reapply the sunless- or self-tanner about every three days to maintain your “tan.” Many clients have a standing appointment weekly while others stretch their visits to every 2 weeks, using ‘tan-extender lotion’ between visits to keep their tan looking dark and rich.

Pro Tanning Systems **TURBO-TAN** Manual

Re-Order product at TURBO-TAN.com

TT3000 and similar Systems Equipment



Depending on which system you purchased, your turbine pump should look like one of the units above. Our Deluxe **3-stage** turbine will provide you with enough air that with our optional “Y” coupler and a 2nd Gun and Hose to operate 2 **TURBO-TAN** Guns at the same time if desired. If you purchased a TNR (Tuned Noise Reduction) model, then your special 3-Stage Turbine features our unique Acoustic Insulation Jacket that reduces much of the noise associated with Turbines. This design provides its greatest sound output reduction at those higher frequencies which are most annoying to the human ear.

Our Deluxe **TURBO-TAN** Spray Gun was designed specifically for the application of our **TURBO-TAN** “DHA” tanning solution and also features a Dual Adjustment Design, which allows you a greater range of Spray Mist Patterns. You can dial the Deluxe Gun’s spray pattern all the way down to as small as a dime as well as the recommended 4” to 5” oval pattern ideal for the 2 minute “DHA” tan. You will actually spray a finer mist with the Deluxe **TURBO-TAN** Spray Gun than with most air brushes.

The 8 ounce **TURBO-TAN** Cup is pressurized to allow for the constant flow of “DHA” solution to the gun tip at almost every possible angle which the gun can be held.

Pro Tanning Systems **TURBO-TAN** Manual

Re-Order product at TURBO-TAN.com

Testing & Adjusting Your Pro Tanning System

Now that your system is assembled, it's ready to test and adjust in preparation for the first use.

First, remove the bottle from the gun.

For this first test, place clean water into the bottle and replace it onto the gun. Turn both Fan & Fluid adjusters all the way in (clockwise).

Making certain that all **TURBO-TAN** Turbine Pump precautions have been followed and that the Turbine Pump is plugged in. Turn the Turbine Pump on.

Next, aim the gun toward a sink, towel or other receptacle to collect the water, and pull the trigger. While the gun is triggered and air and water is flowing, you can twist the fluid adjustment knob to the left (counterclockwise) to increase the trigger travel (see *diagram on page 5*) for the optimum flow of material. Note that the optimum adjustment will usually be one or two turns out, in other words, adjusting it all the way in will usually prevent any trigger movement which will prevent the flow of material from the gun.

Once you begin applying the tanning solution with the gun, you should be able to find the optimum control adjustments for your specific gun-pump-material combination to suit your specific preferences and application technique.

Note that the Turbo-Tan Gun has an additional adjustment, the upper knob, which controls the spray fan pattern of the gun. As above, this should be set only one or two turns out. All the way in produces a round pattern, two or three turns out produces a tall, oval pattern.

You can test this by spraying on paper as you make your final adjustments.

Pro Tanning Systems **TURBO-TAN** Manual

Re-Order product at TURBO-TAN.com

The Client Needs To Know

Before your client comes in for the tanning service, they should be aware of the following:

They should shower and exfoliate to eliminate the surface skin that is ready to sluff. If possible, **apply nail polish or a clear** to prevent the possibility of the nails becoming discolored by the solution.

Wear loose fitting clothes to the session so that upon leaving, the clothing is less likely to scuff off the product and treated skin surface.

Apply no lotions, creams, makeup or other products to the skin or jewelry which could block the tanning solution from penetrating or cause an uneven application or streaking.

Wear an old, dark colored bathing suit or undergarments - planning ahead as to where they want their tan lines - if any. Make them aware that it is slightly possible that the garments they wear during the application, and those they wear home could become stained by the tanning solution depending on the type of fabric - especially if white or light colored natural fibers. Wash all garments upon returning home.

Its generally best for **long hair, especially blonde hair to be tied up** away from the face and neck to allow ready access and an even application.

The client needs to plan ahead to **not bathe, swim or otherwise get wet for 12 hours after the application**. They should also avoid light colored clothing or sitting on light colored or leather furniture for several hours especially if perspiring or in humid climates, as this could transfer the still-active solution to materials and discolor them.

After the 12 hours, when they again bathe or shower, they may notice some color washing off - this is merely the excess.

Its normal, and will still leave them with a deep tan.

Their new tan will begin to fade over the next few days, but the fading can be slowed if they will **moisturize regularly**. The tan is only on the uppermost dead skin layer, which is perpetually being sluffed off. Keeping the skin moisturized and not exfoliating will slow this process, which could extend their tan to perhaps 10 or more days. To achieve the darkest, longest-lasting tan, the client should be **tanned again within 2 or 3 days of the first application**, then

every week or two thereafter. Also, **using Tan Extender** between applications will give the tanned skin a darker and more even appearance.

Pro Tanning Systems **TURBO-TAN** Manual

Re-Order product at TURBO-TAN.com

The Application Process

Once the client has followed the preparations on the previous page, you're ready to start. Don't forget your latex gloves.

Test the gun by spraying a small quantity into a waste basket or sink to make certain that the solution is flowing properly.

With the client standing on a bath mat, towel or rug that you designate for the purpose, its time to start. The tanning process is different with the **TURBO-TAN** system than with an airbrush system because the **TURBO-TAN** System applies much more material in a short time. We recommend the following procedures: With the client facing you, begin by having the client close their eyes and tilt their head back slightly. Begin spraying the face with a light coat moving down the neck to the chest. If starting with the face makes you or the client uncomfortable, reverse this first step - chest - then face. Once this area is complete, spray the tummy. At this point, you can either continue down the front of the legs to the feet, or turn the client and finish the back to complete the upper body. When spraying the front of the legs, have the client place one foot out to allow you to spray the inside of the leg. Alternate the outstretched foot to allow application to all areas of the legs. Have the client turn for access to the side, outside and inside of arm and side of the neck. Have the client continue to turn in the same direction to do their back. Continue on down the back of the legs. Where necessary, have the client bend or stretch to eliminate folds of creases under buns, breasts or other areas as necessary to allow an even application. Once you are confident that you have covered all areas of the client; face, chest, tummy, back, arms, and legs, its generally a good idea to apply an additional spray to the face, and have the client turn so you can examine all areas for sparse or excess coverage. If the solution is running, you should blot it with a towel and spray a small amount to even out the application. Once you are confident that you have an even application, you can go over the client again without triggering the gun - the dry air from the gun will accelerate the drying process. They should avoid lowering their arms against their sides or pressing their thighs together until thoroughly dry.

Pro Tanning Systems **TURBO-TAN** Manual

Re-Order product at TURBO-TAN.com

Finish the Job

Once you have finished, it's time to clean up.

Your **TURBO-TAN** System requires very little cleaning, service or maintenance. After finishing your last client for the day: Rinse the gun fluid cup with clear water, then pour in about 2 or 3 ounces of the pink Cleaning Solution. Spray the cleaning solution through the gun into a sink or other receptacle until you are confident that all of the tanning solution has been washed from the fluid passage of the gun.

Now, examine the front nozzle of the gun to ensure that there is no buildup of product that could obstruct or diminish the fine atomization of product on the next use. If necessary, clean the nozzle with the cleaning solution and a small brush such as a tooth brush or nail brush. Next, remove the fluid cup, and spray until only dry air comes from the gun. Wipe off the outside of the gun, rinse out the fluid cup, and you are now done with the gun for the day.

Next, check the intake air filter on the Turbine Air Pump to make certain that it is free of lint, hair, tanning solution residue or other obstructions that could choke the free flow of air into the Turbine Air Pump.

Make sure that the air hose, Turbine Air Pump and cord are out of the walkway, and the client mat is cleaned or washed if necessary. Finally, this is a good time to check stock on your products including Pro Tanning Solution and Pro Tanning Cleaner.

When you call, ask about our full line of tan-related products, both for your use in the salon and retail products for the client. See page 11 of this manual for a partial list of products available.

If its time to reorder, call (858) 536-7960 during normal business hours, pacific time, or shop on-line at **TURBO-TAN.com**

Frequently Asked Questions

Is this product harmful to my skin?

No. The active ingredient in Pro Tanning Systems Tanning Solution is dihydroxyacetone, or DHA.

DHA has been used in cosmetic preparations for almost 30 years and was listed with the FDA in 1973. In addition to its skin darkening abilities, DHA is also used as an emulsifier, humectant and fungicide. It is declared safe and suitable for use in cosmetics and drugs used to color the skin. DHA is derived from glycerin (vegetable origin), which is a commonly used cosmetic and food ingredient. DHA is not absorbed into the body and poses no possibility of toxicity.

Is this the BEST way to tan without the sun?

Yes. According to the **American Academy of Dermatology**, the **most effective** products available are sunless- or self-tanning products that contain **dihydroxyacetone (DHA)** as the active ingredient. **DHA** is a colorless sugar that interacts with the dead cells located in the stratum corneum of the epidermis. As the sugar interacts with the dead skin cells, a color change occurs. This change usually lasts about five to seven days or more from the initial application.

Is it safer to sun tan once I have a Pro Tanning Tan?

No. It's as if you didn't have it. It's important to remember that DHA doesn't contain an added sunscreen and will not protect you from the sun's UVA and UVB rays. If you are planning to be in the sun, remember that your Pro Tanning Tan is on the first layer of the skin, whereas the sun burns the lower layers. Always wear a good sunscreen whenever tanning in the sun to prevent the potential damage to your skin which is not associated with the Pro Tanning System.

Pro Tanning Systems **TURBO-TAN** Manual

Re-Order product at TURBO-TAN.com

About DHA Tanning:

Skin is made up of two main layers: the epidermis on the outside and the dermis on the inside. Whether you are talking about sun tanning or self-tanning, the epidermis is where the action occurs. The epidermis is also made up of layers. The deepest layer of the epidermis, called the stratum basale (basal layer), is affected during sun tanning. The stratum corneum (horny layer) is the outermost layer of the epidermis — it is this layer that is affected by most sunless-tanning products.

There are several different kinds of sunless-tanning products available today. People have been able to pour on a tan since 1960, when Coppertone® came out with the first sunless-tanning product — QT® or Quick Tanning Lotion. If you are old enough to remember this, then you are probably thinking of the incredibly orange hue this lotion produced. Since then, there have been several advancements made on the sunless-tanning front. These days, you can find tanning sunless- or self-tanners and bronzers. You can spray on a light bronze glow or a deep, dark tan.

According to the **American Academy of Dermatology**, the **most effective** products available are sunless- or self-tanning lotions that contain **dihydroxyacetone (DHA)** as the active ingredient. **DHA** is a colorless sugar that interacts with the dead cells located in the stratum corneum of the epidermis. As the sugar interacts with the dead skin cells, a color change occurs. This change usually lasts about five to seven days from the initial application.

DHA has been used in cosmetic preparations for almost 30 years and was listed with the FDA in 1973. In addition to its skin darkening abilities, DHA is also used as an emulsifier, humectant and fungicide. It is declared safe and suitable for use in cosmetics and drugs used to color the skin. DHA is derived from glycerin (vegetable origin), which is a commonly used cosmetic and food ingredient. DHA is not absorbed into the body and poses no possibility of toxicity.

Every day, millions of dead skin cells are sloughed off or worn away from the surface of your skin. In fact, every 35 to 45 days, you have an entirely new epidermis. This is why tans from sunless- or self-tanning lotions will gradually fade — as the dead cells are worn away, so is your tan. For this reason, most of these products suggest that you reapply the sunless- or self-tanner every week or two to maintain your “tan.”

Pro Tanning Systems **TURBO-TAN** Manual

Re-Order product at TURBO-TAN.com

Directions for safe use for the technician and client:

This product is safe and harmless for the client and technician when used as directed. We recommend the following precautions. You should avoid allowing the mist into the eyes, nose, mouth or other sensitive tissues as rarely, some people have a sensitivity to one or more of the ingredients listed on the back label of the product. When spraying the face, have the client close their eyes, purse their lips, and offer them nose plugs or other protection as necessary. Instruct then to avoid inhaling the spray mist and to inform you if they experience any discomfort or irritation during or after the application.

If the technician sprays numerous clients daily, safety glasses and an N95 rated paper mask should serve as primary protection.

If any reaction, irritation or other apparent effects are observed, discontinue exposure and consult your physician.

A Quick Recap:

Remember that the Turbine Air Pump air outlet and hose may become hot during use. Avoid kinking or allowing the hose to become flattened where it is hot near the air outlet.

Keep the Turbine Pump intake filter clean.

Keep power cord and air hose out of walkways.

Tanning solution can, in some cases, discolor light colored hair and fabrics - when in doubt, cover anything that could be effected.

Have the client turn in front of you - don't reach around.

Spray for good full coverage - but not to the point where the product runs or streaks - A light or medium application is better than a heavy one.

New clients should repeat the application within 48 hours or so for the optimum tan.

Don't spray unprotected palms of hands, soles of feet, light colored hair or clothing or open eyes or mouth.

Have the client bend or stretch as necessary to achieve complete coverage in wrinkles and folds.

Only wipe or blot the wet solution on the client if there is a run from perspiration or excess application - spray some additional product on the wiped area.

Turn on a fan in the spraying room and/or use the untriggered flow of air from the gun to dry the client before leaving the salon.

Remember, you can rotate the Air Cap on the **TURBO-TAN** Gun to change from vertical fan pattern to horizontal fan pattern for spraying legs, arms and sides.

If you have additional questions, visit us on-line at TURBO-TAN.com for the latest tips and information about your system or techniques.

You can also give us a call at 858-536-7960 from 8 am to 5 pm, Monday through Friday, Pacific time.

Pro Tanning Systems **TURBO-TAN** Manual

Re-Order product at TURBO-TAN.com

ProTanningSystems / TURBO-TAN Salon Products

PTS EBS 16

Exfoliating Body Spray - To prepare the client who has not exfoliated prior to coming in to be tanned. 16 oz. Trigger Spray Bottle.

PTS X8

Exfoliating Walnut Body Scrub in retail packaging for the client to use prior to coming in. 8 oz. Retail Tottle.

PTS D1 Intensity Drops

Add a few drops to your solution for a deeper, darker tan for those who have naturally dark skin. 1/2 oz. Dropper Bottle.

PTS B16 Barrier Coat

Apply to the client's palms-of-hands, finger nails and even soles of feet if you prefer to prevent unwanted tanning of these areas. 16 oz. Bottle.

PTS DS16, DS32, DS128 Dark DHA Tanning Solution

The same great DHA Tanning Solution that was provided with your kit - Optimized for your TURBO-TAN System. Pints, Quarts and Gallons.

PTS CS16, CS32, CS128 Clear DHA Tanning Solution

The same as described above but without the colorant - Optimized for your TURBO-TAN System. Pints, Quarts and Gallons.

PTS E8 Tan Extender & Moisturizer

Also a retail item, this quality moisturizer contains 3% DHA allowing the client to extend their salon tan. 8 oz. Retail Tottle.

**To order any of these products, shop with us on-line at
TURBO-TAN.com**

LIMITED WARRANTY

What is covered and for how long

We are confident that your Pro Tanning System components will perform well and therefore warrant to you, as the original purchaser, for a period of six months from the date of original purchase, that your system will be free of mechanical and electrical defects in material and workmanship.

What we will do and how to get service

If your system is covered during the warranty period, we will repair or replace (at our option) the necessary component(s) of your system without cost to you, which will be your exclusive remedy under this warranty. Simply send the system postage prepaid and insured, with proof of purchase and a short description of the problem directly to our service center at the following address: Pro Tanning Systems - 6695 Rasha Street - San Diego, CA 92121-2241 or call (858) 909-2190 during normal business hours Monday through Friday, pacific time.

What is not covered

Our warranty for your product will not cover normal wear of parts, damage resulting from negligent use or misuse of the product, use of improper voltage or current, use contrary to operating instructions or disassembly, repair or alteration by any person other than our service personnel. It also does not cover consumables. Any implied warranty of merchantability or fitness for a particular purpose on your system is limited to the duration of this written warranty. We shall not be liable for any incidental or consequential damages for breach of any express or implied warranty on your system.

How Your State's Law May Apply

Some states do not allow limitations on how long an implied warranty lasts or limitation of incidental or consequential damages, so the above limitation may not apply to you. This warranty gives you specific legal rights, and you may also have other rights which vary from state to state.